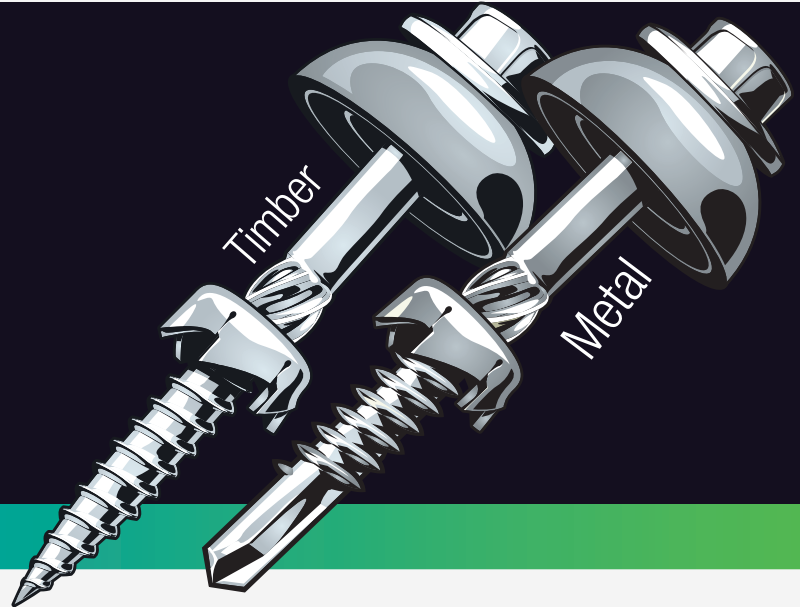


**LASERLITE®**  
POLYCARBONATE FIXINGS

**TIME SAVING** FIXING SYSTEM

- ✓ **One Step**
- ✓ **One Tool**
- ✓ **Easy Installation**
- ✓ **Professional Finish**

**Save 50%**  
installation  
time



## **Timber & Metal** Polycarbonate Fixings

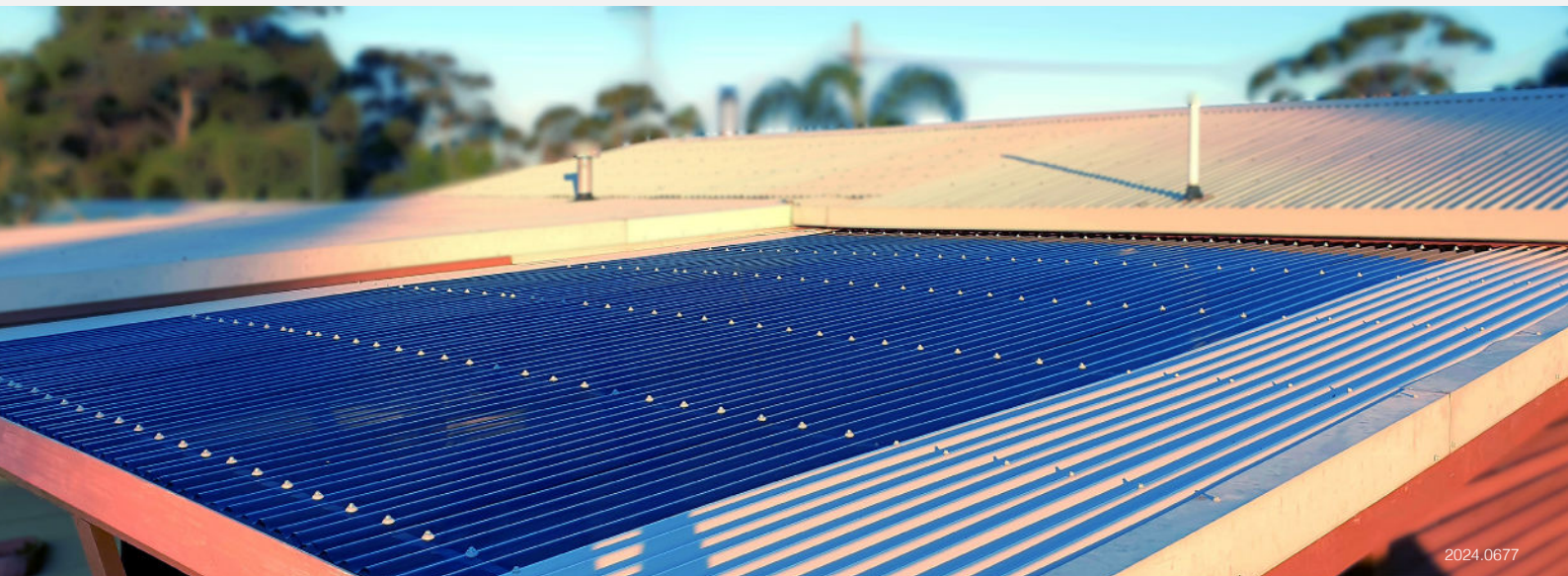
Laserlite® Polycarbonate Fixings - the right choice of fixing for your Laserlite® Polycarbonate Roofing Project.

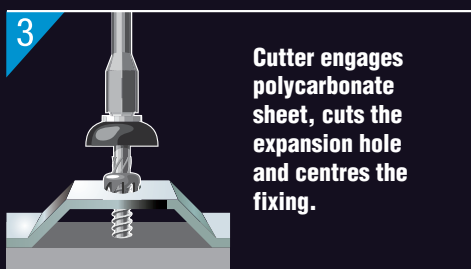
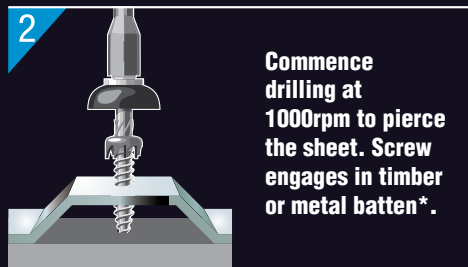
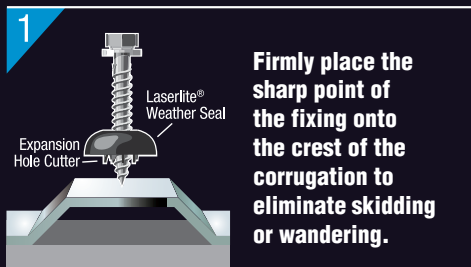
### **Easy** installation

- No more pre-drilling means faster and easier installation.
- No extra expense of specialist tools.
- No extra effort changing tools

### **Professional** Finish

Laserlite® Polycarbonate Fixings cut an expansion hole in the sheet that ensures your Laserlite® Polycarbonate Roofing is installed correctly, allowing for thermal expansion and contraction in all conditions.



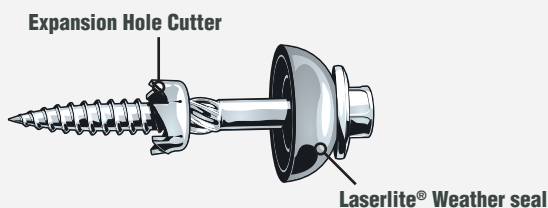


\*Always ensure the appropriate screw is being used for the batten you are drilling into.

## OUR RECOMMENDED CHOICE OF FIXINGS

**NOTE:** For installation of roofs over 3m in height or for cyclonic regions, contact your nearest Laserlite Building Products office for special instructions. Refer to installation guidelines available at [alsynite.co.nz](http://alsynite.co.nz).

**CAUTION:** Always exercise extreme care when working on a roof. Use walking boards along purlins or battens. Never walk directly on the sheeting. Always wear safety glasses or goggles when operating cutting tools or drills.

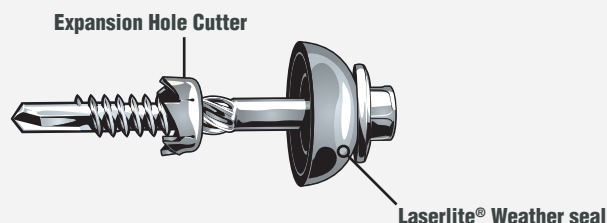


Length	Corrugated	Greca	5-rib	Pack Size
50mm	•	•		50 PACK
50mm	•	•		250 BOX
50mm	•	•		1000 BOX
65mm			•	50 PACK
65mm			•	200 BOX
65mm			•	500 BOX

# TIMBER

### Specifications

- Coated to AS3566 Class 4
- 12 gauge
- 11 threads per inch
- Suitable for use with treated timber
- Type 17 (shape of tip)
- Hex Head
- Suitable for use with 5/16" Drive
- Cuts an 11mm nominal expansion hole
- Suitable for use at a drill speed of 1000rpm



Length	Corrugated	Greca	5-rib	Pack Size
60mm	•	•	•	50 PACK
60mm	•	•	•	200 BOX
60mm	•	•	•	500 BOX

# METAL

### Specifications

- Coated to AS3566 Class 4
- 12 gauge
- 14 threads per inch
- Suitable for use with battens - thickness 0.75mm - 4.5mm
- Hex Head
- Suitable for use with 5/16" Drive
- Cuts an 11mm nominal expansion hole
- Suitable for use at a drill speed of 2000rpm

Drilling of holes during installation may cause metal swarf, which needs to be removed immediately in order to avoid rust marks on the roof sheeting. Roof sheet will not be replaced under warranty in this instance. The information contained in this brochure is to the best of our knowledge accurate, but all recommendations are made without any warranty whatsoever since the conditions of use are beyond our control. This brochure cancels and supersedes all previous published information. The company reserves the right to alter and revise without notice the information contained herein.

for more information, visit  
[alsynite.co.nz](http://alsynite.co.nz)

Distributed by:

ALSYNITE ONE